

AVENGER

CLEANING SYSTEM



For Small Shops, Work Cell & Automotive Service Facilities

Are you tired of washing all your parts by hand? Then step up to the next level with Jenfab's Avenger parts washing system.

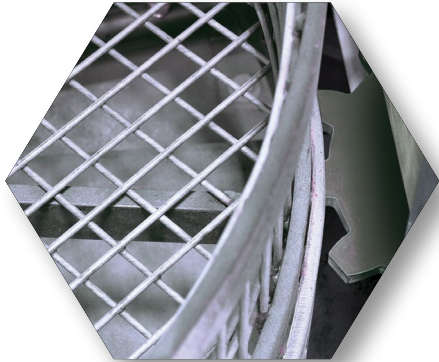
The Avenger is ideal for small shops, automotive service facilities and work cell cleaning operations that want to save time and labor without spending a lot to do it. Small and compact, the Avenger is perfect for tight spaces and requires virtually no training to operate. The lift-up lid and wash basin are constructed of durable stainless steel, so rusting will never be an issue. Jenfab's unique gear and sprocket driven turntable also means you'll never have to worry about replacing worn out belts or drive chains. In addition, the Avenger comes with a built-in fluid strainer that helps extend the life of your cleaning solution, so your money doesn't go down the drain.



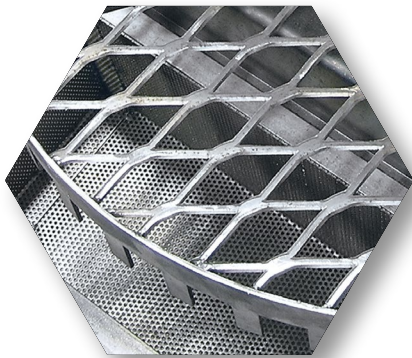
For small parts like fasteners that have difficult soils to remove, there is a soaking reservoir below the turntable for use prior to washing. An optional drop-in belt oil skimmer can also be added. Users will likewise appreciate the no mess drip tray, which keeps your shop floor safe and dry while removing parts after the wash cycle.

For the superior cleaning of a cabinet washer without the cost, you can't beat Jenfab's Avenger parts washing system.





Sprocket Driven Turntable



Soaking Reservoir/
Chip Basket



Built In "Y" Fluid Strainer

FEATURES:

- » Stainless Steel Cabinet - Never worry about rusting.
- » Sprocket Driven Turntable - No need to change worn out drive belts or chains.
- » Built In "Y" Fluid Strainer - Extends the life of your cleaning solution.
- » Soaking Reservoir - For parts with difficult soils or debris.
- » Low Water Shutoff - Protects the pump from burn up.
- » 15-Minute Wash Timer - For flexibility and efficiency in washing.
- » Removable Water Tray (not shown) - To catch excess water when changing cleaning solution.
- » Detail Brush With Dedicated Pump
(this feature is optional and costs extra)

SYSTEM SPECS:

OPERATION TYPE	Manual, soak and automatic
POWER OPTIONS	120V Single Phase 60 Hz 230V Single Phase 60 Hz
UNIT DIMENSIONS	
Depth	38"
Height	55"
Height With Lid Open	79"
Working Height	12"
Width	35"
Turntable Load Height	30"
Turntable Diameter	21"
Pump	1 hp horizontal
Pump Output	20 gpm@30 psi
Heat Source	1.5 kw@120 volts / 3kw@230 volts
SOAK BASKET DIMENSIONS	
Depth	7"
Height	5-1/2"
Width	16"
VOLUME CAPACITY	
Reservoir	20 gallons
WEIGHT CAPACITY	
Maximum Weight Cap	100 lbs
Shipping Weight	475lbs plus pkg 85lbs = 560 lbs
Filled Weight	475lbs plus 20-gallon 166lbs = 641 lbs
OPERATING TEMPERATURE	
Maximum Temperature	135 Degrees F. for 120 Volt 160 Degrees F. for 230 Volt
Time to Heat to Operating Temperature	2-2.5 Hours for 120 Volt 1-1-1/4 Hours for 230 Volt

LISTING

